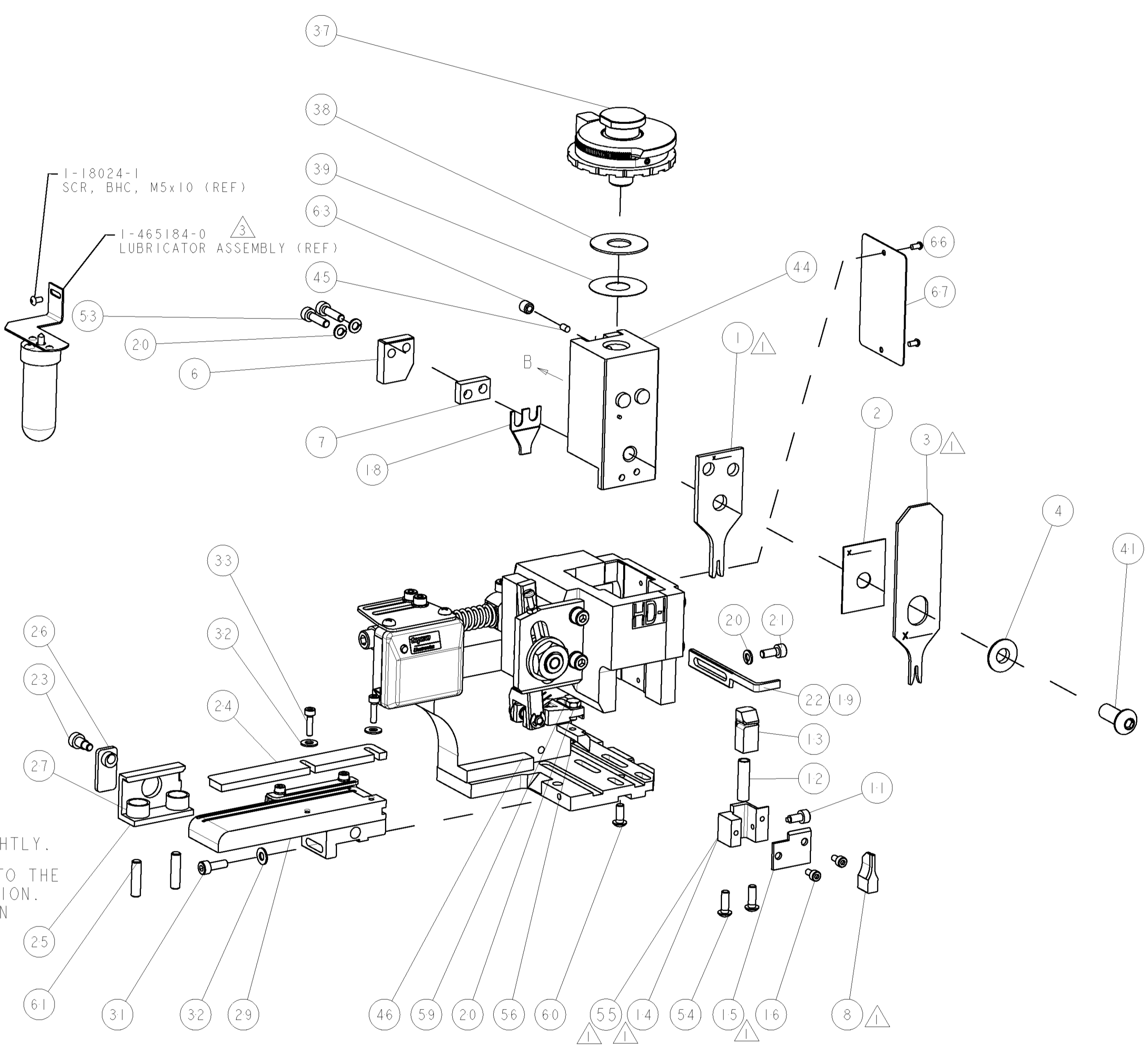


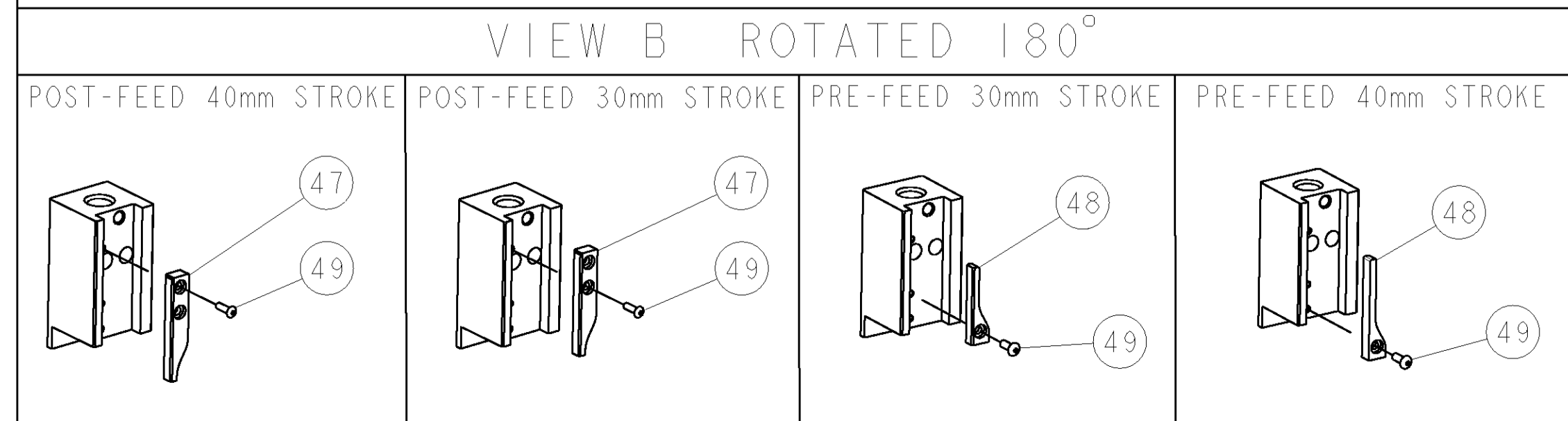
PART NUMBER	REV	TERMINATOR	FEED TYPE	DESCRIPTION
1528172-1	C	LEADMAKER	MECH POST FEED	CUTS CARRIER
1528172-2	C	BENCH	MECH PRE FEED	CUTS CARRIER
1528172-6	C	LEADMAKER	MECH POST FEED	CONTINUOUS CARRIER
7-1528172-1	C	LEADMAKER	MECH POST FEED	-1 AND SPARE PARTS
7-1528172-2	C	BENCH	MECH PRE FEED	-2 AND SPARE PARTS
7-1528172-6	C	LEADMAKER	MECH POST FEED	-6 AND SPARE PARTS
7-1528172-7	A	-	-	SPARE PARTS KIT

CRIMP DATA		TE TERMINAL	TE CRIMP SPECS
TERMINAL NAME: MODU RECEPTACLE WITH SPRING			
CRIMP	SIZE	TYPE	RANGE
WIRE	1.40 [1.055 IN]	F	0.35-0.50mm <sup>2</sup>
INSUL	1.78 [1.070 IN]	O	1.20-1.60 [1.047-1.063 IN]
WIRE STRIP LENGTH 4.00 [1.57 IN]		APPL INSTRUCTIONS 408-8322 & 408-8490	
TERMINAL APPL SPEC 114-18022/5		FEED 6.50 [1.256 IN]	
TERMINALS APPLIED			
963720	-	-	-
-	-	-	-
-	-	-	-
-	-	-	-
-	-	-	-
WIRE SIZE	CRIMP HEIGHT	REF SETTING	
0.50mm <sup>2</sup>	0.92 ± 0.03 [1.036 ± 0.001 IN]	B0	
0.35mm <sup>2</sup>	0.84 ± 0.03 [1.033 ± 0.001 IN]	B5	
0.25mm <sup>2</sup>	0.79 ± 0.03 [1.031 ± 0.001 IN]	B8	
0.20mm <sup>2</sup>	0.76 ± 0.03 [1.030 ± 0.001 IN]	C1	

- △ RECOMMENDED SPARE PARTS.
- 2. GREASE RAM, CAM, CAM FOLLOWER AND FEED ROD LIGHTLY.
- △ CERTAIN TERMINALS REQUIRE LUBRICATION. REFER TO THE APPLICATOR INSTRUCTION SHEET FOR MORE INFORMATION.
- 4. LUBRICATE DAILY PER THE APPLICATOR INSTRUCTION SHEET SUPPLIED WITH THE APPLICATOR.
- △ REAR CUT OFF TAB TO BE REFERENCED BY CUSTOMER DRAWING 963720, AVAILABLE ON REQUEST.



\* WARNING  
ON INSTALLATION, SET WIRE DISC TO LARGEST WIRE SIZE SETTING. USE OF SETTINGS BELOW MIN. REQUIRED CRIMP HEIGHT SETTING WILL CAUSE DAMAGE TO CRIMP TOOLING.



-77	-76	-72	-71	-6	-2	-1	PART NO	DESCRIPTION	ITEM NO
-	-	-	-	-	-	-	-	-	84
-	-	-	-	-	-	-	-	-	83
-	-	-	-	-	-	-	-	-	82
-	-	-	-	-	-	-	-	-	81
-	-	-	-	-	-	-	-	-	80
-	-	-	-	-	-	-	-	-	79
-	-	-	-	-	-	-	-	-	78
-	-	-	-	-	-	-	-	-	77
-	-	-	-	-	-	-	-	-	76
-	-	-	-	-	-	-	-	-	75
-	-	-	-	-	-	-	-	-	74

LOC	DIST	REV	DATE	BY	CHK	APPV
A	66	B	01OCT2008	MC	MC	
		C	20OCT2009	MY	TE	

REV	DATE	DESCRIPTION	ITEM NO						
-	-	-	73						
-	-	-	72						
-	-	-	71						
-	-	-	70						
-	-	-	69						
-	-	-	68						
-	-	-	67						
-	-	-	66						
-	-	-	65						
-	-	-	64						
-	-	-	63						
-	-	-	62						
-	-	-	61						
-	-	-	60						
-	-	-	59						
-	-	-	58						
-	-	-	57						
-	-	-	56						
-	-	-	55						
-	-	-	54						
-	-	-	53						
-	-	-	52						
-	-	-	51						
-	-	-	50						
-	-	-	49						
-	-	-	48						
-	-	-	47						
-	-	-	46						
-	-	-	45						
-	-	-	44						
-	-	-	43						
-	-	-	42						
-	-	-	41						
-	-	-	40						
-	-	-	39						
-	-	-	38						
-	-	-	37						
-	-	-	36						
-	-	-	35						
-	-	-	34						
-	-	-	33						
-	-	-	32						
-	-	-	31						
-	-	-	30						
-	-	-	29						
-	-	-	28						
-	-	-	27						
-	-	-	26						
-	-	-	25						
-	-	-	24						
-	-	-	23						
-	-	-	22						
-	-	-	21						
-	-	-	20						
-	-	-	19						
-	-	-	18						
-	-	-	17						
-	-	-	16						
-	-	-	15						
-	-	-	14						
-	-	-	13						
-	-	-	12						
-	-	-	11						
-	-	-	10						
-	-	-	9						
-	-	-	8						
-	-	-	7						
-	-	-	6						
-	-	-	5						
-	-	-	4						
-	-	-	3						
-	-	-	2						
-	-	-	1						
-77	-76	-72	-71	-6	-2	-1	PART NO	DESCRIPTION	ITEM NO
1	2	2	2	1	1	1	1-1333201-3	ANVIL, COMBINATION	8
-	-	-	-	-	-	-	1-240641-2	SPACER	7
-	-	-	-	-	-	-	690468-2	DEPRESSOR SHEAR, REAR	6
-	-	-	-	-	-	-	-	-	5
-	-	-	-	-	-	-	1-238009-2	BLOCK, FL CRIMPER SPACER	4
1	2	2	2	1	1	1	4-456135-6	CRIMPER, INSULATION O PREMIUM	3
-	-	-	-	-	-	-	455888-5	SPACER, CRIMPER	2
1	2	2	2	1	1	1	456402-6	CRIMPER, WIRE PREMIUM	1

DIMENSIONS: mm [IN]		TOLERANCES UNLESS OTHERWISE SPECIFIED: 9 PLC ± 8 PLC ± 5 PLC ± 4 PLC ± ANGLES ±		DWG: M. CLIFFORD 01OCT2008 CHK: M. CLIFFORD APVD: M. CLIFFORD 01OCT2008 PRODUCT SPEC: APPLICATION SPEC: See Table WEIGHT: CUSTOMER DRAWING		Tyco Electronics Harrisburg, PA 17105-3608 NAME: <b>FINE ADJUST SIDE FEED HDI APPLICATOR</b> SIZE: CAGE CODE DRAWING NO: A1 00779 C=1528172 SCALE: 3:5 SHEET 1 OF 1 REV C	
CUSTOMER ACCESSIBLE PRODUCTION DRAWING							