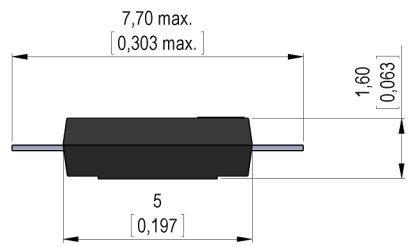
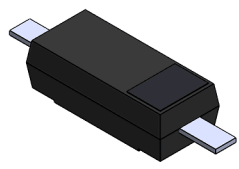


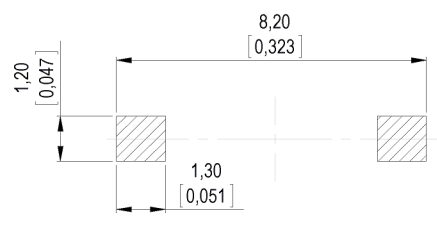
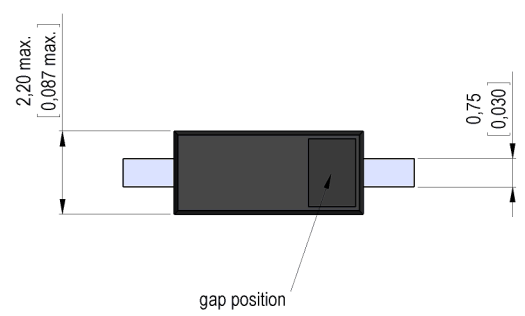
**Dimensions mm[inch]**  
 tolerances according to DIN ISO 2768-m  
 Toleranzen gem. DIN ISO 2768-m



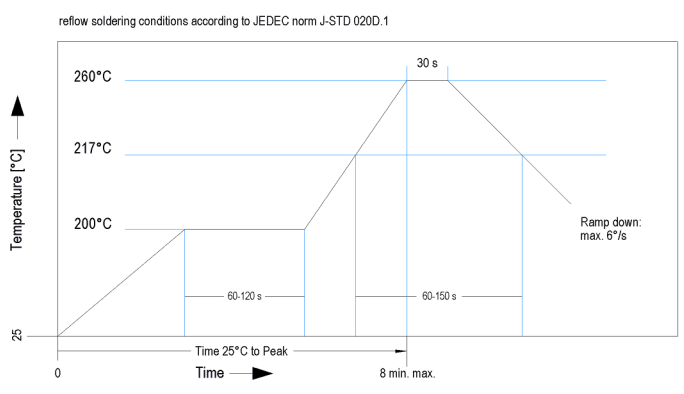
**Isometric**  
 Scale 5:1  
 Maßstab 5:1



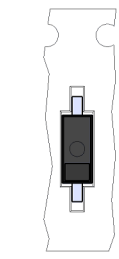
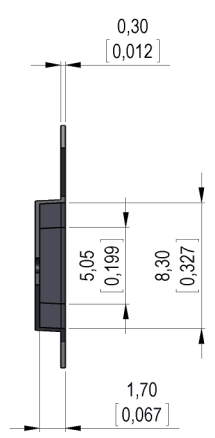
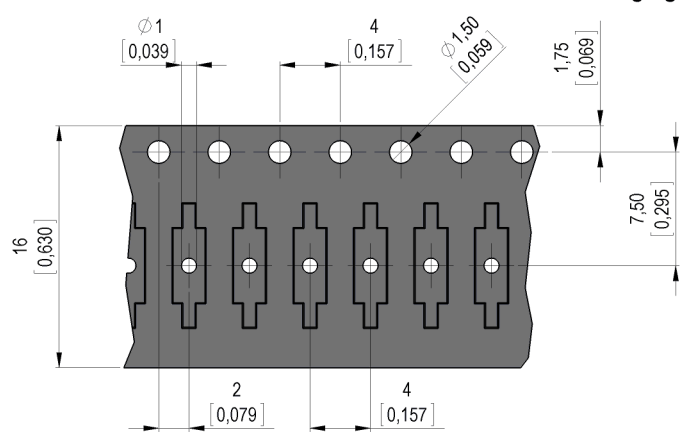
**Recommended PCB Pad Layout**



**Solder Reflow Profile**



**Packaging**



Gap position opposite to the sprocket holes.



Europe: +49 / 7731 8399 0 | Email: info@meder.com  
 USA: +1 / 508 295 0771 | Email: salesusa@meder.com  
 Asia: +852 / 2955 1682 | Email: salesasia@meder.com

Item No.:  
**9240000013**  
 Item:  
**MK24-D-1**

*Products for tomorrow...*

| Magnetic properties                      | Conditions  | Min        | Typ | Max | Unit |
|--|---|------------|-----|-----|------|
| Pull-In excitation (modified contact)    | Reed switch modified<br>phys. conditioned tolerance of +/- 1 AT | 61         |     | 100 | AT   |
| Test equipment                           | Testing 100%  | KMS11+AP66 |     |     |      |
| Pull-In in milliTesla (modified contact) | MS150 -<br>phys. caused tolerance +/- 0,1mT                     | 5          |     | 8,2 | mT   |

| Contact data 04                    | Conditions   | Min | Typ | Max  | Unit |
|------------------------------------|--|-----|-----|------|------|
| Contact rating (> 9 AT)            | Any DC combination of V & A<br>not to exceed their individual max.'s |     |     | 3    | W    |
| Switching voltage                  | DC or Peak AC  |     |     | 30   | V    |
| Switching current (> 9 AT)         | DC or Peak AC  |     |     | 0,3  | A    |
| Carry current (> 9 AT)             | DC or Peak AC  |     |     | 0,5  | A    |
| Contact resistance static (>9AT)   | Measured with 40% overdrive<br>Start value                           |     |     | 200  | mOhm |
| Insulation resistance              | RH <45 %, 100 V test voltage   | 10  |     |      | GOhm |
| Breakdown voltage (> 9 AT)         | according to IEC 255-5   | 100 |     |      | VDC  |
| Operate time incl. bounce (> 9 AT) |  |     |     | 0,2  | ms   |
| Release time                       | measured with no coil excitation                                     |     |     | 0,15 | ms   |
| Capacity                           | @ 10 kHz across open switch  |     | 0,1 |      | pF   |

| Special Product Data    | Conditions | Min | Typ | Max | Unit |
|-------------------------|------------|-----|-----|-----|------|
| Reach / RoHS conformity |            |     | yes |     |      |

| Environmental data          | Conditions                            | Min          | Typ | Max | Unit |
|-----------------------------|---------------------------------------|--------------|-----|-----|------|
| Shock                       | 1/2 sine, duration 11ms, in 3 axis    |              |     | 30  | g    |
| Vibration                   | from 10 - 2000 Hz                     |              |     | 20  | g    |
| Operating temperature       |                                       | -40          |     | 115 | °C   |
| Storage temperature         |                                       | -55          |     | 115 | °C   |
| Soldering Temperature Tsold | Reflow according IPC/JEDEC J-STD-020C |              |     | 260 | °C   |
| Washability                 |                                       | fully sealed |     |     |      |

| General data | Conditions | Min  | Typ | Max | Unit |
|--------------|------------|--|-----|-----|------|
| Remark       |            | Pick & place force should not exceed 25cN! |     |     |      |
| Packaging    |            | Tape & Reel per 2000 pcs. / Tray H20       |     |     |      |

Modifications in the sense of technical progress are reserved

Designed at: 04.03.10    Designed by: THAUKE  
 Last Change at: 12.07.12    Last Change by: THAUKE

Approval at: 04.03.10    Approval by: JHEYDER  
 Approval at: 23.07.12    Approval by: AWEBER

Version: 4