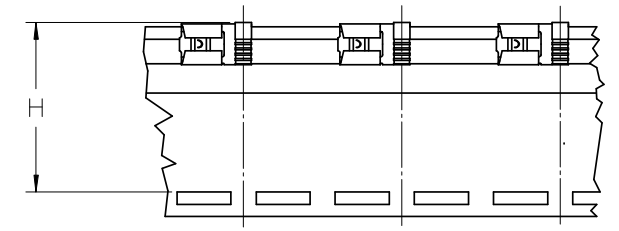
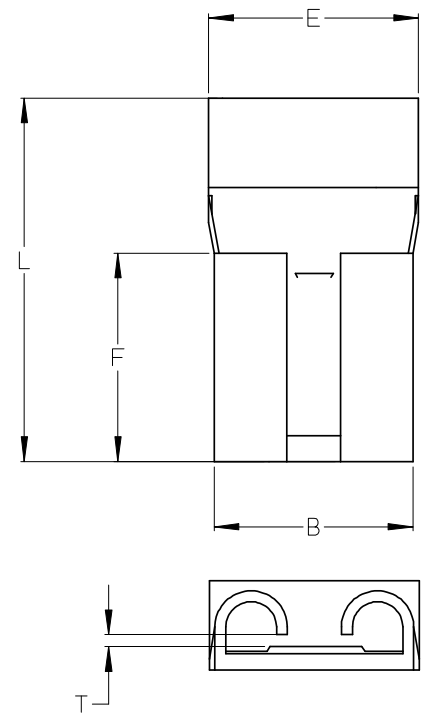
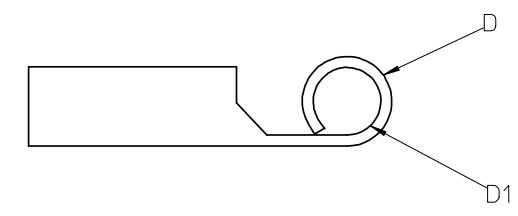


MATERIAL NUMBER LOOSE PIECE	MATERIAL NUMBER TAPE MOUNTED	WIRE RANGE AWG	T MAX	B MAX	F MAX	L MAX	E MAX	D1 MIN	D MAX	H NOMINAL
192030375	192030525	16-14	.036/1.90	.302/7.66	.331/8.40	.587/14.92	.311/7.90	.083/2.10	.134/3.40	1.255/31.88
192030380	-	12-10	.036/1.90	.302/7.66	.331/8.40	.619/15.72	.378/9.60	.149/3.78	.193/4.90	-

ⓓ



ⓓ PARTS ON TAPE



- NOTES:
1. MATERIAL: STEEL. 016/0.40 THICK REF
 2. PLATING: NICKEL
 3. WIRE RANGE: SEE CHART
 4. PART IS ROHS COMPLIANT.
 5. AMBIENT OPERATING TEMPERATURE UP TO 900 °F (483 °C).
 6. PART IS ROHS COMPLIANT.

ⓓ

ADD TAPE PART EC NO: WNA 2008-0119 DRWN: ETHRODAHL 2008/03/14 CHKD: MACNEIL 2008/03/27 APPR: MACNEIL 2008/04/21 REV DESCRIPTION	QUALITY SYMBOLS	GENERAL TOLERANCES (UNLESS SPECIFIED)	DIMENSION STYLE	SCALE	DESIGN UNITS	THIRD ANGLE PROJECTION
	▼=0 ▽=0	4 PLACES ±--- 3 PLACES ±--- 2 PLACES ±--- 1 PLACE ±---	IN/MM	---	INCH	
		mm INCH	DRAWN BY	DATE	TITLE	
			ASAYDEH	05/12/05	FLAG QD TERMINAL, STEEL, KRIMPTITE, 900 DEG F (483 DEG C)	
		ANGULAR ±---°	CHECKED BY	DATE	MATERIAL NO. DOCUMENT NO. SHEET NO.	
		RDEROSS	05/12/05	SD-19203-024 1 OF 1		
		DRAFT WHERE APPLICABLE MUST REMAIN WITHIN DIMENSIONS	APPROVED BY	DATE	MOLEX INCORPORATED	
			RDEROSS	05/12/05	THIS DRAWING CONTAINS INFORMATION THAT IS PROPRIETARY TO MOLEX INCORPORATED AND SHOULD NOT BE USED WITHOUT WRITTEN PERMISSION	
			SIZE			
			B			